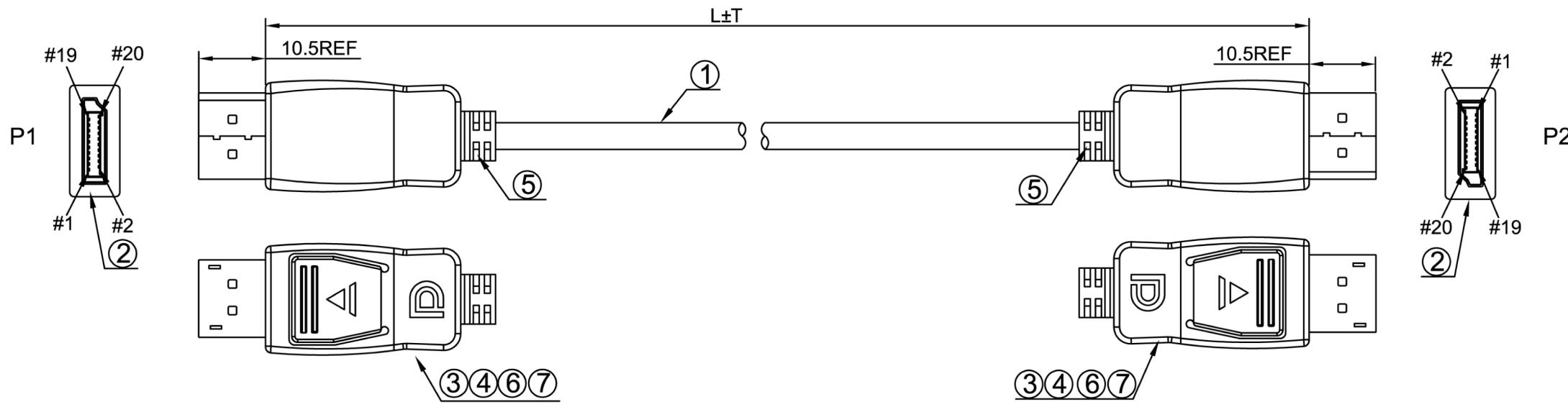


DESCRIPTION CONTROL			
REV	DESC	DATE	ECN NO
B		08-07-30	N20807658



PIN ASSIGNMENT	
P1	P2
1	12
3	10
2	11
4	9
6	7
5	8
7	6
9	4
8	5
10	3
12	1
11	2
13	13
14	14
15	15
17	17
16	16
18	18
19	19
S	S

NO	TYPE	DESCRIPTION	QTY	UNIT
	DP-1	L = 1m		
	DP-2	L = 2m		
	DP-3	L = 3m		
	DP-5	L = 5m		
*				
*				
7		FOIL-CU-20MM	50*2	MM
6		PE-5321	5	G
5		PVC-WH72/50	8	G
4	130000099038	DISPLAYPORT:上蓋<WH>	2	PCS
3	130000099039	DISPLAYPORT:下蓋<WH>	2	PCS
2		DISPLAYPORT:20PIN/BLACK<SOLDERING TYPE><宣得>	2	PCS
1		(2C*30#+D+A+MYLAR)*5C+4C+30#+MYLAR +A+B-WH72-ø6.0MM-UL20276 <聯穎>	L	M

RoHS COMPLIANT

OUTER MOLDING	MF481		
INNER MOLDING			
		ITEM: DS00000000XX002	REV B
DRAW,BY:葉麗珍		SCALE:NONE	DATE: 2008/03/08
CHECK,BY:		CUSTOMER: C337	PAGE: 1/1
APP,BY		CUSTOMER P/N:	

ALL DIMENSIONS IN mm